



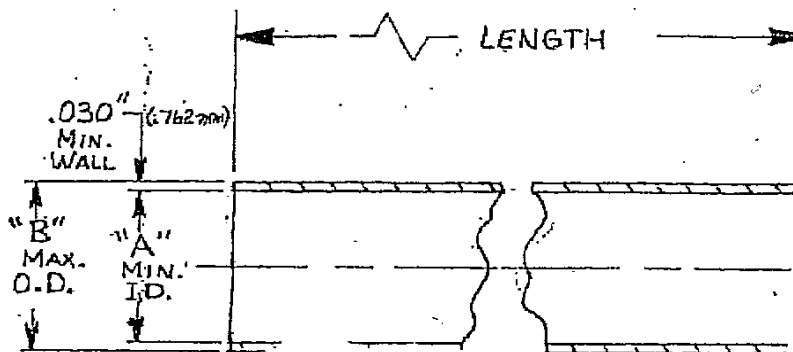
## DATA SHEET

### MYLAR SLEEVE SIZING IMPERIAL

#### DESCRIPTION

PART NO	NOMINAL BOLT SIZE	MINIMUM I D "A"	MAXIMUM O D "B"
FIMYLAR 1/2	1/2" (12.70mm)	.519" (13.18mm)	.599" (15.21mm)
FIMYLAR 5/8	5/8" (15.88mm)	.644" (16.38mm)	.724" (18.39mm)
FIMYLAR 3/4	3/4" (19.05mm)	.769" (19.53mm)	.849" (21.56mm)
FIMYLAR 7/8	7/8" (22.33mm)	.894" (22.71mm)	.974" (24.74mm)
FIMYLAR 1	1" (25.40mm)	1.019" (25.88mm)	1.099" (27.91mm)
FIMYLAR 1-1/8	1-1/8" (28.58mm)	1.144" (29.06mm)	1.224" (31.09mm)
FIMYLAR 1-1/4	1-1/4" (31.75mm)	1.269" (32.23mm)	1.349" (34.26mm)
FIMYLAR 1-3/8	1-3/8" (34.93mm)	1.394" (35.41mm)	1.474" (37.44mm)
FIMYLAR 1-1/2	1-1/2" (38.10mm)	1.519" (38.58mm)	1.599" (40.61mm)
FIMYLAR 1-5/8	1-5/8" (41.28mm)	1.644" (41.76mm)	1.724" (43.79mm)
FIMYLAR 1-3/4	1-3/4" (44.45mm)	1.769" (44.93mm)	1.849" (46.96mm)
FIMYLAR 1-7/8	1-7/8" (47.63mm)	1.894" (48.11mm)	1.974" (50.14mm)
FIMYLAR 2	2" (50.80mm)	2.019" (51.28mm)	2.099" (53.31mm)
FIMYLAR 2-1/2	2-1/2" (63.50mm)	2.519" (63.98mm)	2.599" (66.01mm)

#### APPLICATIONS



Industrial Gaskets reserves the right to change or modify any of its products, no liability is entered into or given on any of the data provided. Consultation of a technician should be sought if in any doubt.



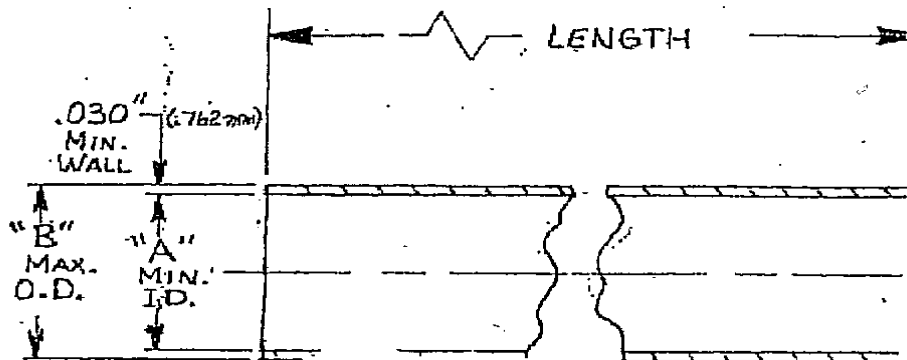
## DATA SHEET

### MYLAR SLEEVE SIZING METRIC

#### DESCRIPTION

Part No	Bolt Size		"A" (MIN)ID	"B" (MAX) OD	"C" (MIN) WALL
	Metric	Inch Equiv			
FIMYLARM8	M8	.315"	.334" (8.48mm)	.375" (9.52mm)	.015" (0.38mm)
FIMYLARM12	M12	.472"	.491" (12.48mm)	.532" (13.51mm)	.015" (0.38mm)
FIMYLARM16	M16	.630"	.649" (16.48mm)	.690" (17.53mm)	.015" (0.38mm)
FIMYLARM20	M20	.787"	.806" (20.48mm)	.847" (21.51mm)	.015" (0.38mm)
FIMYLARM24	M24	.945"	.964" (24.48mm)	1.005" (25.53mm)	.015" (0.38mm)
FIMYLARM27	M27	1.063"	1.082" (27.48mm)	1.162" (29.51mm)	.030" (0.76mm)
FIMYLARM30	M30	1.181"	1.200" (30.48mm)	1.280" (32.51mm)	.030" (0.76mm)
FIMYLARM33	M33	1.299"	1.318" (33.48mm)	1.398" (35.51mm)	.030" (0.76mm)
FIMYLARM36	M36	1.417"	1.436" (36.48mm)	1.516" (38.52mm)	.030" (0.76mm)
FIMYLARM39	M39	1.535"	1.554" (39.48mm)	1.634" (41.50mm)	.030" (0.76mm)
FIMYLARM45	M45	1.772"	1.791" (45.48mm)	1.871" (47.52mm)	.030" (0.76mm)
FIMYLARM48	M48	1.890"	1.909" (48.48mm)	2.028" (51.51mm)	.030" (0.76mm)
FIMYLARM52	M52	2.047"	2.066" (52.48mm)	2.146" (54.51mm)	.030" (0.76mm)
FIMYLARM56	M56	2.205"	2.224" (56.48mm)	2.422" (61.52mm)	.030" (0.76mm)
FIMYLARM64	M64	2.520"	2.539" (64.48mm)	2.737" (69.52mm)	.030" (0.76mm)

#### APPLICATIONS



Industrial Gaskets reserves the right to change or modify any of its products, no liability is entered into or given on any of the data provided. Consultation of a technician should be sought if in any doubt.